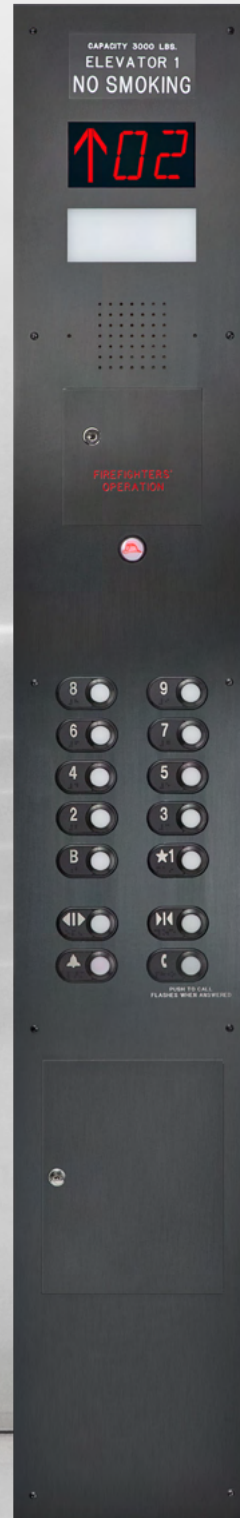
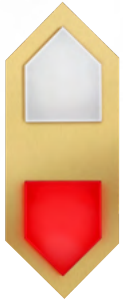




ELEVATOR PRODUCTS  
CORPORATION

## DISTINCTIVE ELEVATOR FIXTURES





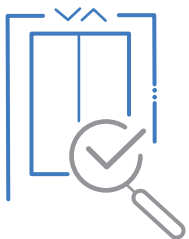
**CUSTOMER EXPERIENCE** - EPCO is dedicated and focused on providing beneficial results to our customers. We strive for customer satisfaction throughout each process and work hard to make our customer experience a valuable one. At EPCO, we treat all customers with respect and provide personal attention to every request regardless of the scope of work or size of their business. We build strong, personal relationships with our customers and as a result, our customers continue to support and grow our business.



**CUSTOMIZATION** - EPCO is an industry leader in the design and manufacturing of elevator fixtures. We provide fixtures for all stages of installation including new construction projects, elevator modernizations in existing buildings, fixture upgrades, or maintenance and repairs of existing products. EPCO's product portfolio is extensive and includes standard and custom fixture designs that are ADA compliant. Our fixture offerings include main and auxiliary car operating panels in applied or full swing front assemblies, hall buttons, arrival lanterns, floor position indicators, video displays and much more.



**LOYALTY** - EPCO is an established business that has been operating for over 65 years. We have proven over time to be knowledgeable in elevator fixtures and innovative in our designs. This proficiency and expertise in product development and execution has built loyalty between EPCO and our customers. We specialize in the impossible and work with individual customers to meet their design expectations and installation needs. EPCO is a customer focused organization and we value every customer relationship. We are loyal to each customer and in turn, our customers remain loyal to us.



**QUALITY PRODUCT** - EPCO is an industry leader in elevator fixtures for product design and execution. We have been manufacturing for over 65 years employing some of the most skilled designers and fabricators in the industry. EPCO produces a superior product by using high quality materials and by encouraging our customers to provide feedback on our designs and installation techniques. We work in coordination with our customers to enhance our product assemblies and their usage. Our product output is a result of skilled engineering and durable materials. Through continuous innovation, training, inspection, and assessment, we advance our fixture design offerings and ensure a high-quality product to our valued customers. Quality matters and quality is EPCO.



# Contents

<b>New York Design</b>	3
<b>California Jewel Design</b>	4
<b>Florida Design</b>	5
<b>Vandal Resistant Design</b>	6
<b>Radius Design</b>	7
<b>SSL-H/MML-H Design</b>	8
<b>SPS-S/SPS-M Design</b>	9
<b>Retro-Fit/Dover Replacements</b>	10
<b>INCHLine Design</b>	11-12
<b>Custom Fixtures</b>	13-15
<b>Touchscreens &amp; Displays</b>	16-19
<b>Destination Dispatch</b>	20-24
- COPs	
- Temporary Button Covers	
- Elevator I.D. Hall Signs	
- Jamb Plates	
<b>Lobby &amp; Security Panels</b>	25-26

# NEW YORK DESIGN

The New York collection is a distinctive fixture package that offers sophisticated layouts with exceptional design features. Versatility and customization are the main characteristics of this product line which delivers high-end results and complimentary details. Available in both standard and customizable assemblies, this eye-catching design is a perfect fit for low, mid, and high-rise building installations.

## OPTIONS

### > LED COLOR



### > BRAILLE PLATE



### > METAL FINISH

STAINLESS  
STEEL

BLACK

BRONZE

LIGHT

MEDIUM

DARK

### > PUSHBUTTONS



8SS

4BL

4MZ

4SS



# CALIFORNIA JEWEL DESIGN

The California Jewel collection incorporates a larger, white illuminated button cap surface to meet California code. White LED color and white braille plate markings are the signature look of the California fixture package. Although this fixture line was developed for California building requirements, it is versatile and comes in all LED color options and metal finishes. Many property owners and consultants pursue this attractive collection to enhance their architectural layouts.

## OPTIONS

### > LED COLOR



### > BRAILLE PLATE



### > METAL FINISH



STAINLESS STEEL    BLACK    BRONZE    LIGHT    MEDIUM    DARK

### > PUSHBUTTONS



8SS

4BL

4MZ

4SS

4SS



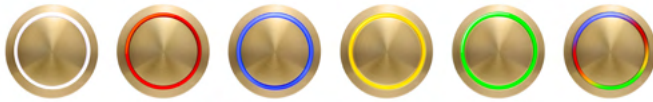


# FLORIDA DESIGN

The Florida collection is an elegant fixture series that exceeds your expectations of an exceptional look with high durability. Distinguished by an integral pushbutton and braille plate assembly, this collection encompasses style, artistry and functionality. Building owners and design teams can refer to the Florida collection for a myriad of fixture options.

## OPTIONS

### > LED COLOR



### > BRAILLE PLATE



### > METAL FINISH

STAINLESS  
STEEL

BLACK

BRONZE

LIGHT

MEDIUM

DARK

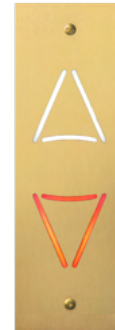
### > PUSHBUTTONS



STUDLESS SERIES



WGH SERIES



# VANDAL RESISTANT DESIGN

The Vandal Resistant (VR) Collection includes the toughest vandal resistant fixtures in the elevator market. This fixture line was created and tested thoroughly to withstand extensive wear and tear. This unique and impressive line of fixtures offers an appearance and quality that exceeds all expectations.

## OPTIONS

### > LED COLOR



### > BRAILLE PLATE

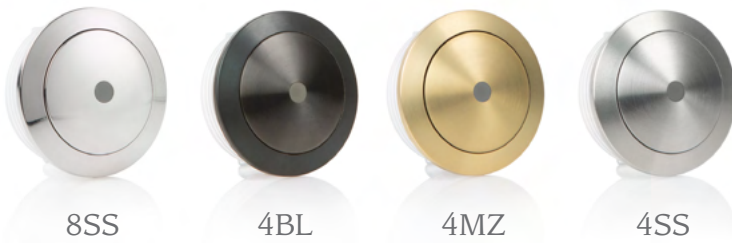


### > METAL FINISH



STAINLESS STEEL    BLACK    BRONZE    LIGHT    MEDIUM    DARK

### > PUSHBUTTONS



8SS

4BL

4MZ

4SS



# RADIUS DESIGN

The Radius collection is a versatile fixture package that offers a complete and smooth approach to your project installations. This product line includes options from our studless button series and produces a final design that compliments your elevator entrances and interiors. The surface mounted hall fixtures provide an efficient and effective result that will satisfy your project specifications.

## OPTIONS

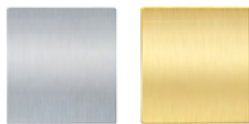
### > LED COLOR



### > BRAILLE PLATE



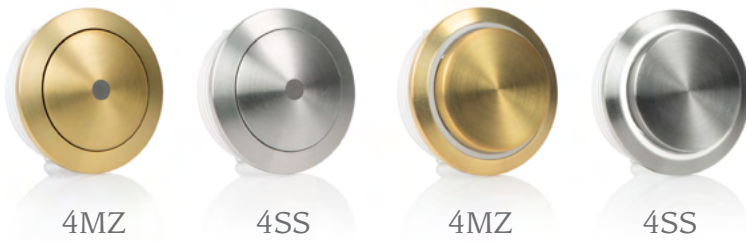
### > METAL FINISH



STAINLESS  
STEEL

BRONZE

### > PUSHBUTTONS



4MZ

4SS

4MZ

4SS





# SSL-H/MML-H DESIGN

The SSL-H/MML-H collection provides a unique lighting element for your fixture designs. The attractive look of this assembly is created by a solid button cap and a clear light-up halo surround that enhances your LED color option. This collection comes in both stainless steel finishes (SSL-H) and bronze finishes (MML-H) to satisfy all of your architectural requirements. The SSL-H/MML-H collection is for building owners and design teams that want to deliver both an elegant look and a one-of-a-kind experience.

## OPTIONS

### > LED COLOR



### > BRAILLE PLATE



### > METAL FINISH

STAINLESS  
STEEL

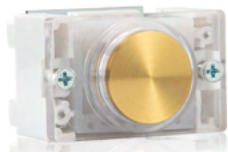
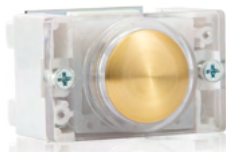
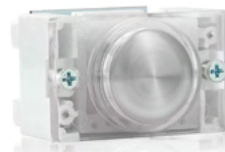
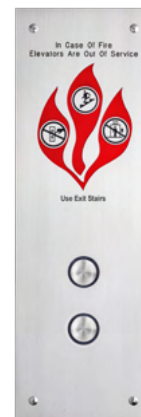
BRONZE

LIGHT

MEDIUM

DARK

### > PUSHBUTTONS

4MZ  
PROJECTING  
FLAT CAP4MZ  
DOMED  
FLUSH CAP4SS  
PROJECTING  
FLAT CAP4SS  
DOMED  
FLUSH CAP

## SPS-S/SPS-M DESIGN

The SPS – Singapore Square Collection is a fixture design that combines elegance in style with reliability in function. This package is available in a variety of stainless steel (SPS-S) and muntz bronze (SPS-M) finishes. The button assembly features our shallow Singapore base which makes for an easy installation when wall depth is limited. The appeal of this product focuses on the square shape of the lighting components which exude an angular, modern feel. The attractive SPS design provides a versatile approach to enriching your building décor and enhancing aesthetic results.

### OPTIONS

#### > LED COLOR



#### > BRAILLE PLATE



#### > METAL FINISH

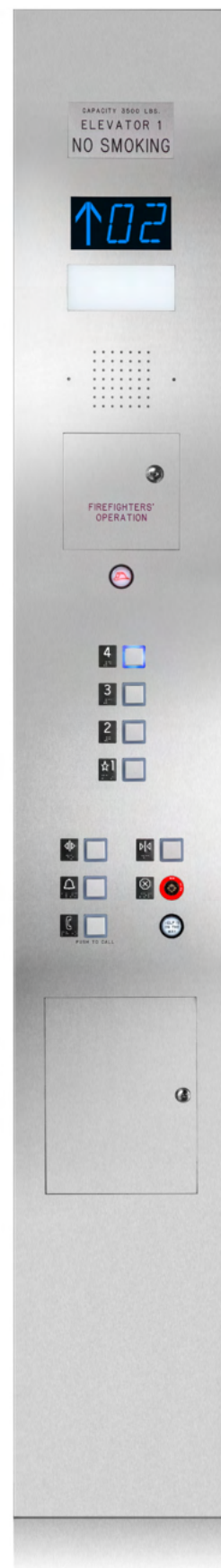


STAINLESS STEEL    BRONZE    LIGHT    MEDIUM    DARK

#### > PUSHBUTTONS



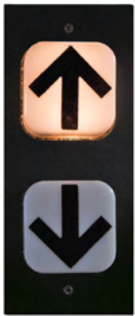
4MZ    4MZ    4SS    4SS  
FLUSH METAL INSERT CAP    METAL INSERT w/ PROJECTING CAP    FLUSH METAL INSERT CAP    METAL INSERT w/ PROJECTING CAP



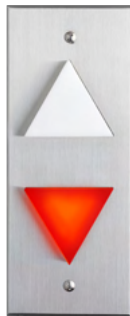
# RETRO-FIT / DOVER REPLACEMENTS

The Retro-Fit fixture package was created as a direct replacement option for existing Dover Impulse fixtures. The older and outdated Dover fixtures can be replaced with our sleek Retro-Fit designs. These assemblies provide a seamless approach for new product installations limited by existing and restrictive conditions. The EPCO designs are sized to work with original Dover Impulse dimensions and come in multiple styles and layout options.

## HALL LANTERN



ORIGINAL



EPCO RETRO-FIT

## COMBO PI/LANTERN



ORIGINAL



EPCO RETRO-FIT

## HALL STATION



ORIGINAL



EPCO RETRO-FIT

## CAR OPERATING PANEL



ORIGINAL



EPCO RETRO-FIT



# INCHLine DESIGN

The INCHLine surface mount collection is an innovative design created by EPCO offering a quick and easy mounting installation that provides a great labor-saving option. These fixtures attach directly to the existing box or wall surface, cover existing fixture openings, and eliminate any cutting or patching of existing walls. Property owners and architects can add decorative details and unique engraving to these adaptable cover plates to enhance their building décor.

## > HALL LANTERNS



## > HALL STATIONS



# INCHLine DESIGN

The INCHLine collection is highly customizable in both size and design. The metal covers are available in standard finishes or may be matched to customer samples. The combination floor position indicator/lantern fixtures are enhanced through a numerous selection of LED color options and lens shapes. These dual output assemblies are extremely versatile, functional, and elegant in appearance.

## > FLOOR POSITION INDICATORS



## > COMBO PI/LANTERNS



# CUSTOM FIXTURES

EPCO is an industry leader in elevator fixtures with excellence in custom detailing and product superiority. We deliver high performance with strength in uniqueness of design. We offer a vast selection of options and work with architects and design teams to produce one-of-a-kind fixtures for our sophisticated & discerning clients.

## CAR OPERATING PANELS

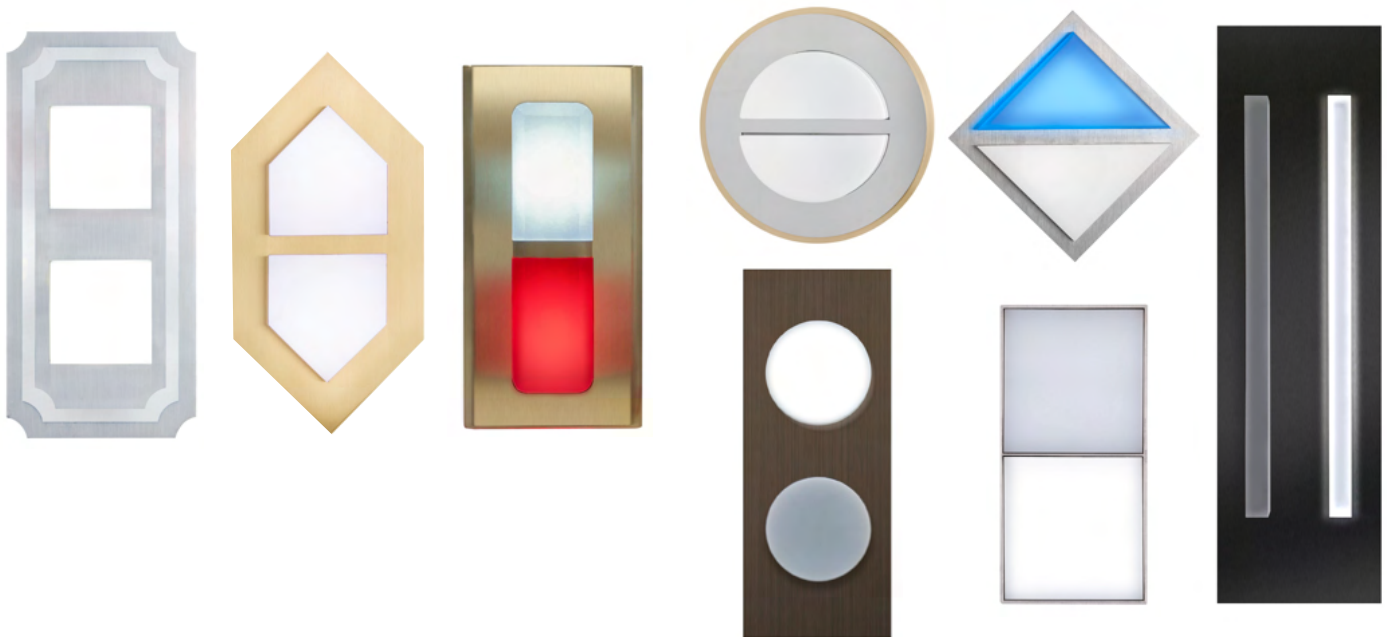




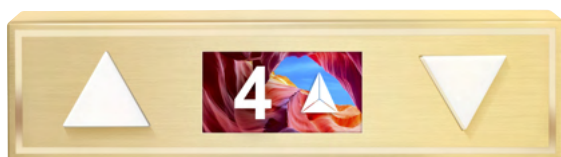
# CUSTOM FIXTURES - HALL DESIGNS

EPCO excels in delivering superior custom fixtures. The development of these assemblies is inspired by the client and their unique building decor. Working with architects and design teams allows EPCO to produce exceptional quality products with emphasis on exclusivity in their details. We have a vast portfolio of custom creations installed in various locations ranging from historical buildings to contemporary skyscrapers.

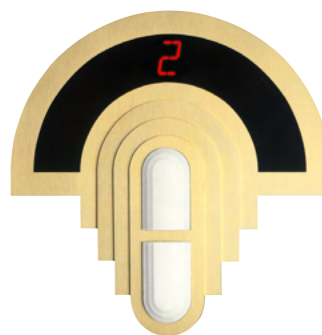
## HALL LANTERNS



## COMBO PI/LANTERNS



INCHLINE



FANFARE



ENCORE



# CUSTOM FIXTURES - HALL DESIGNS

EPCO hall button fixtures can be customized to include dual finishes and personalized graphics. For a one-of-a-kind product, we can incorporate building designs and company logos that promote your business location and unique brand. With EPCO fixtures, your advertising opportunity is amplified daily through the elevator experience.

## HALL STATIONS



# TOUCHSCREENS & DISPLAYS

EPCO fixtures are highly regarded for their exceptional quality and unique craftsmanship. Included in our portfolio are digital floor touchscreens and graphic display options from various manufacturers that can be incorporated into our fixture designs. Our touchscreens and image displays are advanced engineering devices that can be customized to enhance your building decor and programmed to match your design detailing.

## TOUCHSCREENS

The touch displays allow for ease of use and passenger interaction. They are perfect for installing into tight elevator spaces where mechanical buttons will not allow for ADA compliancy. We include a separate ADA keypad to meet that compliance.

### MAIN FEATURES

- Completely touch with customizable background, arrows, floors, logo and signaling
- Full HD resolution
- Editor via local network or touch screen on display for setting graphic
- User-friendly menu and editor
- Suitable for COP installations
- Serial and parallel operation
- Tempered glass support thickness 5mm
- Possibility to update video and music
- Voice synthesizer integrated
- Clock integrated
- Internet access for updating of news, weather, and clock
- Colors: 16.8 M
- Temperature range: -4/158°F
- Software updating is available by USB port on a button in the car

### TECHNICAL FEATURES

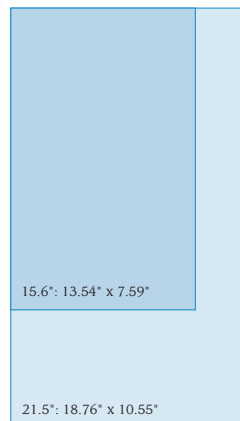
#### > 15.6" Touch

- Resolution: 1920 x 1080 pixels
- Power Supply: 12/24 VDC  $\pm 10\%$
- Dimensions: 15.75" x 11.81" x 1.97"
- Encumbrance: 13.85" x 10.86" x 1.61"

#### > 21.5" Touch

- Resolution: 1920 x 1080 pixels
- Power Supply: 12/24 VDC  $\pm 10\%$
- Dimensions: 19.92" x 11.93" x 2.8"

VIEWABLE AREA





## FLOOR POSITION INDICATOR DISPLAYS

### > 2.8"

#### FEATURES

- Easy configuration through software and PC.
- Updating by SD Card.
- Customizable background, arrows, floors, logo and signaling.
- Energy saving system mode (stand-by).
- Easy keypad for the selection of the main features (buzzer volume, communication interface, first floor, brightness, stand-by duration).
- Mounting: protection case.
- Mounting: horizontal and vertical.



#### TECHNICAL FEATURES

- Dimensions: 2.8"
- Visible area: 1.67" x 2.24"
- Resolution: 240 (RGB) x 320 QVGA
- Pixel (mm): 0.18 x 0.18mm
- Colors: 65,000
- Energy consumption: 100mA
- Power supply: 12/24 VDC
- Temperature range: -4/158°F
- Encumbrance: 2.76" x 4.33"

### > 4.3"

#### FEATURES

- Easy configuration through software on PC.
- Updating by SD Card.
- Customizable background, arrows, floors, logo and signaling.
- Customizable background with pictures and sounds (for car position indicators).
- Energy saving system mode (stand-by).
- Easy keypad for the selection of the main features (buzzer volume, communication interface, first floor, brightness, stand-by duration).
- Mounting: protection case.
- Mounting: horizontal and vertical.
- Calendar (for car position indicators).



#### TECHNICAL FEATURES

- Dimensions: 5.79" x 3.11"
- Visible area: 3.79" x 2.12"
- Cut out: 3.75" x 2.12"
- Encumbrance: 6.33" X 3.15"
- Resolution: 480(RGB) x 272 WVGA
- Pixel (mm): 0.198 x 0.198 mm
- Colors: 65,000
- Energy consumption: 220mA
- Power supply: 12/24 VDC
- Temperature range: -4/158°F
- Parallel version (inputs 1 pole for floor)
- Wiring: wiring connectors

## FLOOR POSITION INDICATOR DISPLAYS

> 7"

### FEATURES

- Easy configuration via PC.
- Customizable background, arrows, floors, logo and signalling.
- Customizable background with pictures and sounds.
- Energy saving system mode (stand-by).
- Easy keypad for the selection of the main features (buzzer volume, communication interface, first floor, brightness, stand-by duration).
- Mounting: protection case.
- Mounting: horizontal and vertical.
- Voice synthesizer on board.
- Calendar.
- Software updating is available by USB port on a button in the car.
- Updating by USB/SD card.

### TECHNICAL FEATURES

- Dimensions: 7"
- Visible area: 6.06" x 3.39"
- Resolution: 800(RGB) x 480 -WVGA
- Pixel (mm): 0.1926 x 0.1179 mm
- Colors: 16 M
- Energy consumption: 360mA
- Power supply: 12/24 VDC  $\pm 10\%$
- Temperature range: -4/158°F
- Encumbrance: 7.01" x 6.54" x 0.91"



### COMBO PI/LANTERNS



## VIDEO OUTPUT DISPLAYS

### > 7" and 10.1"

#### FEATURES

- Customizable background, arrows, floors, logo and signaling.
- Voice synthesizer integrated.
- High resolution Images management.
- High performance for Music and audio.
- High performance for Video.
- Analog and digital clock.
- Serial and parallel interface.
- USB HOST Connectivity.
- Connectivity LAN (ETHERNET).
- Video OUT-HDMI.
- Colours: 16.8 M.
- Temperature range: -4/158°F.
- Software updating is available by USB port on a button in the car.



#### TECHNICAL FEATURES

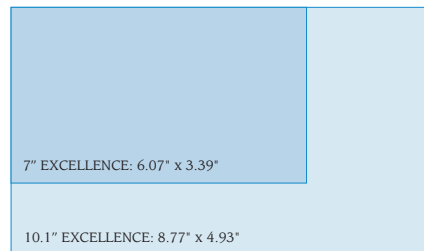
##### > 7" EXCELLENCE

- Resolution: 800 x 480 pixels
- Visible area: 6.06" x 3.39"
- Power supply: 12/24 VDC ±10%
- Encumbrance: 7.01" x 6.54" x 0.91"

##### > 10.1" EXCELLENCE

- Resolution: 1024 x 600 pixels
- Visible area: 8.77" x 4.93"
- Power supply: 12/24 V DC ±10%
- Encumbrance: 9.84" x 7.48" x 0.85"

#### VIEWABLE AREA





# DESTINATION DISPATCH

Destination Dispatch (DD) technology optimizes elevator performance in highly populated buildings by strategically moving passengers from floor to floor. High efficiency is realized by assigning passengers with similar floor destinations to specific elevators. This focused effort greatly reduces the number of elevator stops and waiting periods which maximizes the amount of people being transported simultaneously. EPCO has an extensive portfolio of DD fixture designs that include car operating panels, hall fixture displays and car identification signs.

## > CAR OPERATING PANELS

Destination dispatching of elevators replaces mechanical pushbuttons used by passengers. In place of the visible pushbuttons, the panel includes a locked cabinet with light-up floor buttons which is only accessible to emergency service personnel.



# DESTINATION DISPATCH – HALL DESIGNS

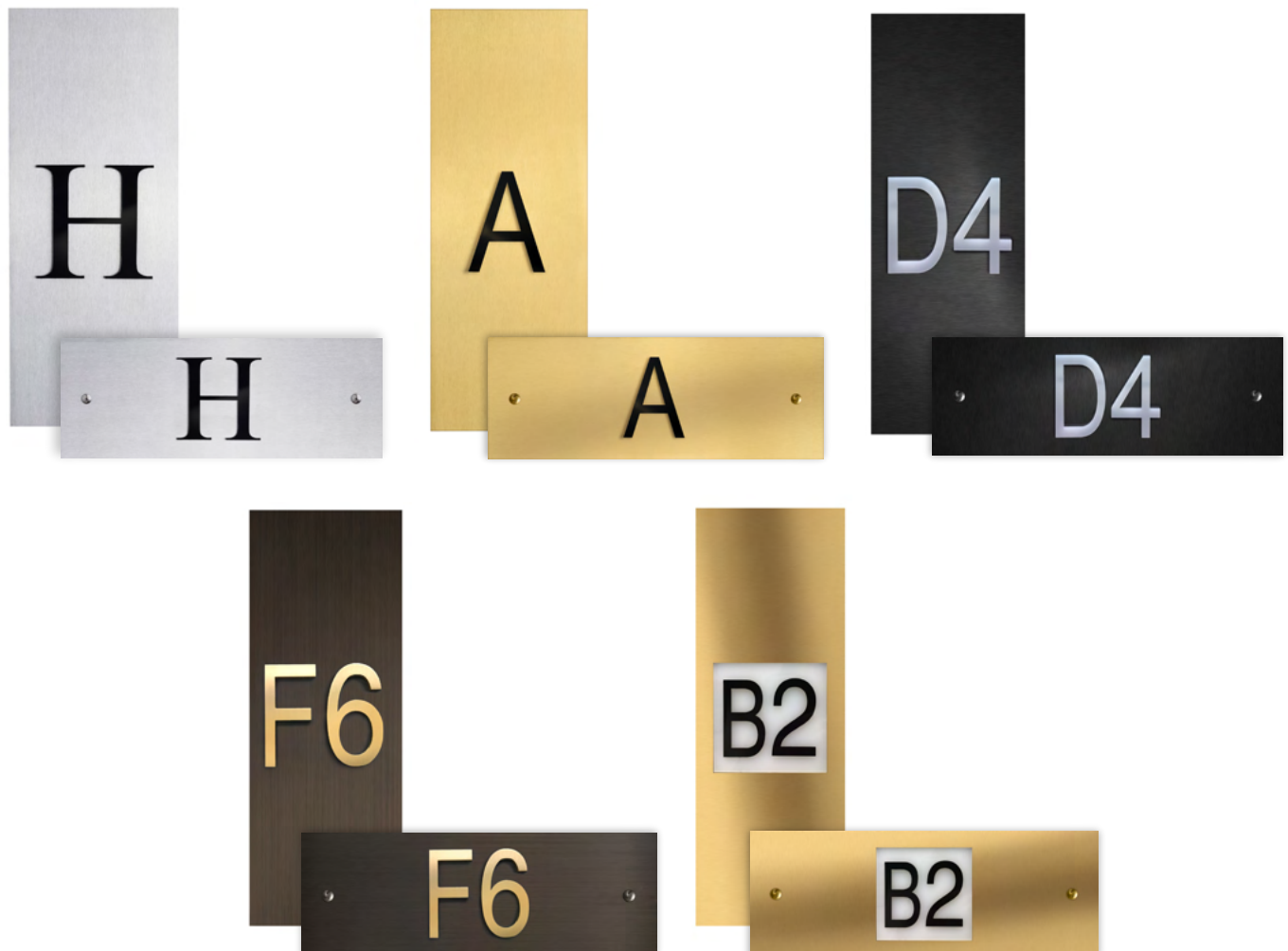
## > ELEVATOR IDENTIFICATION SIGNS

With your new destination dispatch operation, your elevator identification signs in the hall are critical in getting your passengers to their assigned elevators. EPCO specializes in standard and custom DD signage that can enhance your viewing location while meeting your installation needs.



## > FLUSH MOUNTED INACTIVE SIGNS

These flat plate signs are very versatile and may be installed using various approaches. They can include strong adhesive backing for flat wall surfaces or can be attached to your existing hall lantern boxes by matching existing hardware applications such as screws or hidden fasteners.



# DESTINATION DISPATCH – HALL DESIGNS

## > PROJECTING SIGNS – ACTIVE & INACTIVE

Destination Dispatch signs are used in place of traditional directional lanterns in elevator entryways. EPCO specializes in matching our unique designs to your existing box locations and cover plate fastening requirements. Available in both horizontal and vertical mountings, our DD signs are sized to meet your viewing and lighting needs. You can choose from a variety of customizable layouts or we can create a signature look to enhance your brand and building décor.





# DESTINATION DISPATCH

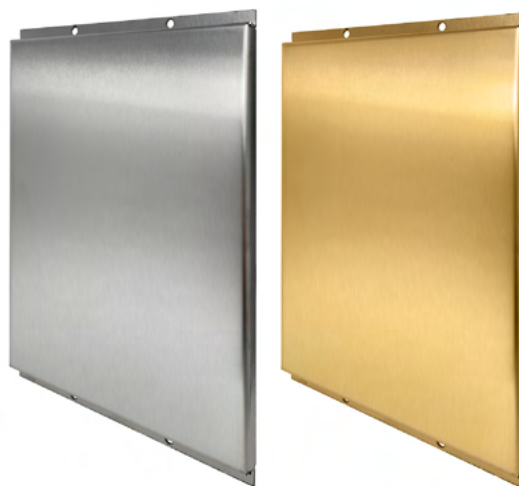
## > TEMPORARY FLOOR BUTTON COVERS

EPCO manufactures both stainless steel and muntz bronze floor button covers for your phased destination dispatch installations. We match your required metal finishes and size each temporary cover to enclose your existing floor button layouts. We ensure a code-compliant product that meets your serviceability needs while you transition your elevators from traditional dispatching to fully modernized DD operations.

MAIN CAR  
OPERATING PANEL COVER

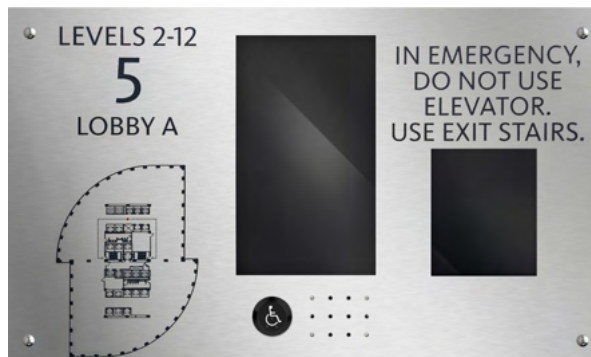


AUXILIARY CAR  
OPERATING PANEL COVER



## > HALL TOUCH DISPLAY FIXTURES

EPCO manufactures standard and custom hall display fixtures for your dispatching operation. Our designs range from flush to surface mounted to highly custom layouts. We work with various display products and create designs that enhance the passenger experience and complement your building décor.



# DESTINATION DISPATCH – JAMB BRAILLE PLATES

## > ADA COMPLIANT ELEVATOR I.D./FLOOR MARKING JAMB PLATES

To complete the transition to Destination Dispatch operation in your building, EPCO can provide both standard and custom jamb braille plate designs for your elevator entryways. Destination Dispatch jamb plates are installed in elevator entrances to allow passengers to confirm the correct elevator assignment and to comply with the Americans with Disabilities Act (ADA) as defined by the Department of Justice. The DD jamb plates are combination plates that include both the floor marking and elevator car designation on an extended plate. These combination plates are typically available in standard finishes and markings. Because EPCO specializes in custom designs, we can work with our jamb plate vendor to customize your braille plate layouts. The result is a one-of-a-kind product that compliments the paint and metal finishes on your elevator entrances and enhances your unique building decor.

SS#4 ON BLACK



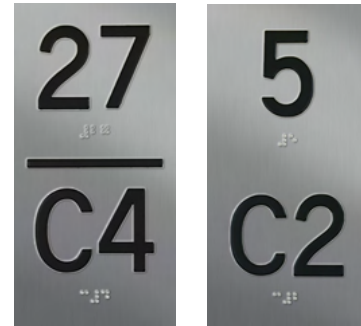
DD-48-BAR DD-48 (NO BAR)

BZ#4 ON BLACK



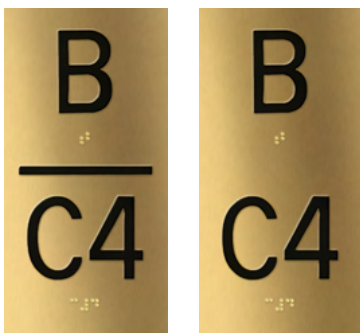
DD-48-BAR DD-48 (NO BAR)

BLACK ON SS#4



DD-48-BAR DD-48 (NO BAR)

BLACK ON BZ#4



DD-48-BAR DD-48 (NO BAR)

WHITE ON BLACK  
BLACK ON WHITE



DD-48-BAR DD-48 (NO BAR)

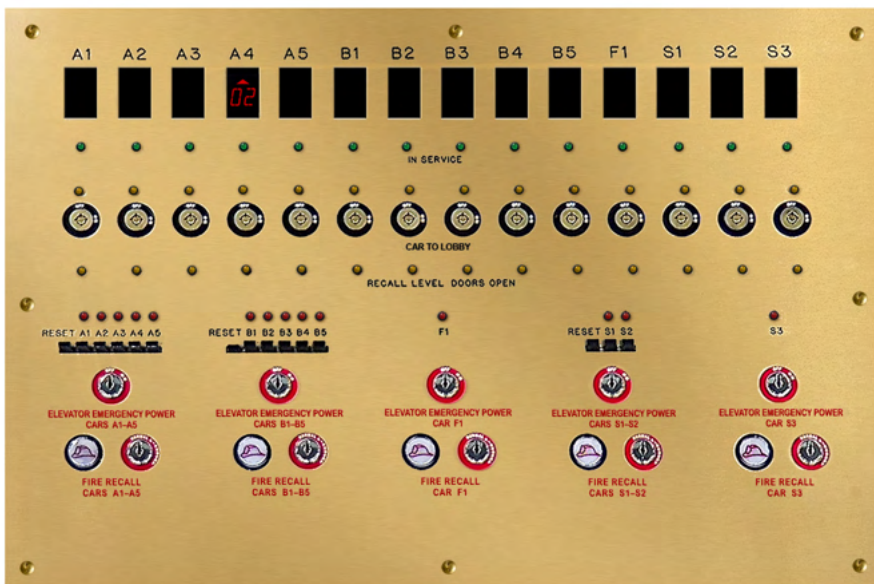
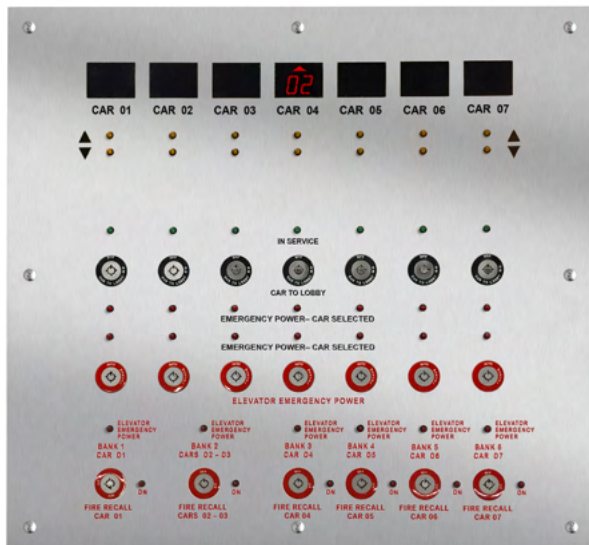
CUSTOM FINISHES



DD-58-BAR

# LOBBY AND SECURITY PANELS

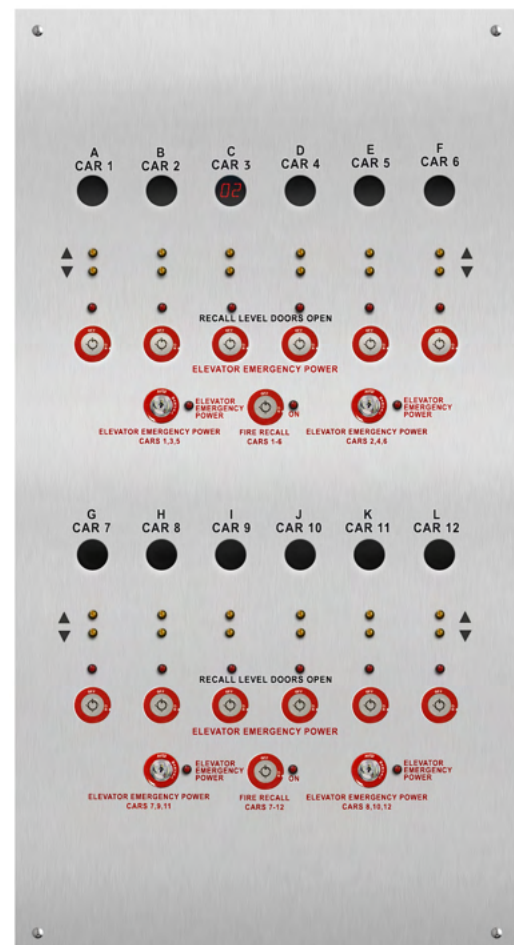
EPCO produces a variety of standard and highly custom security-based service panels. We work directly with our clients and their consultants to provide a code-compliant fixture. Our designs include secured access to emergency elevator functions that adhere to local building and emergency service regulations. Our fixtures excel in quality, durability, and precision in design.





# LOBBY AND SECURITY PANELS

EPCO specializes in fixture panels that require a custom assembly or have an unusual or difficult mounting site. We can retrofit our design to work with existing boxes or match space limitations. Our products are installed in various locations including lobby desk consoles, front lobby walls, fire command centers, and other unique architectural spaces as defined by each building's decor.



# **DISTINCTIVE ELEVATOR FIXTURES**



**ELEVATOR PRODUCTS  
CORPORATION**

100 Demarest Drive | Wayne, NJ 07470  
Tel (973) 341-8000 | Fax (973) 341-8080 | email: [info@epco.us](mailto:info@epco.us)

**[www.epco.us](http://www.epco.us)**