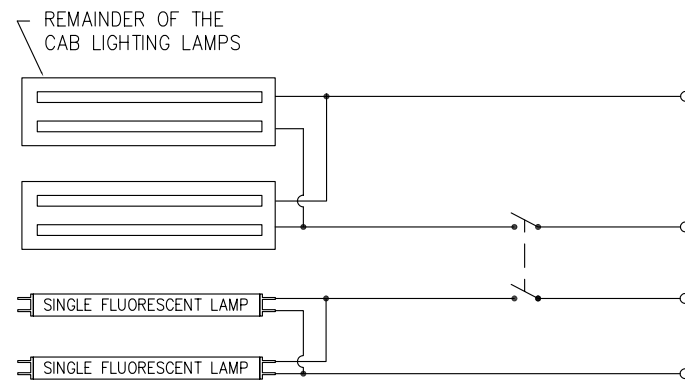
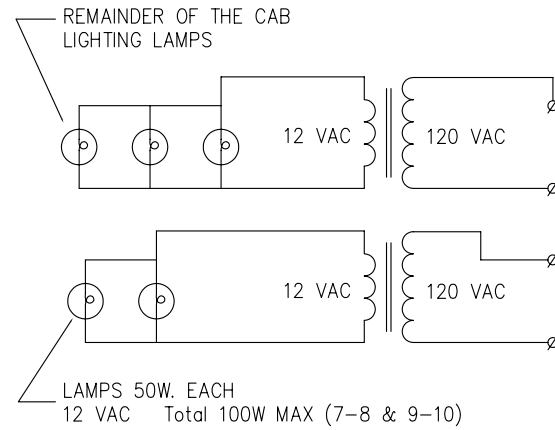


FLUORESCENT LAMPS

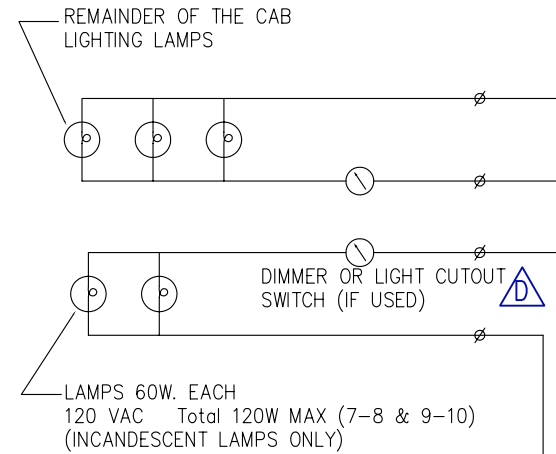


LAMPS #F40T12 MAX.
WITH SINGLE OR DUAL
BALLAST. 120 VAC.
(FLUORESCENT LAMPS ONLY)

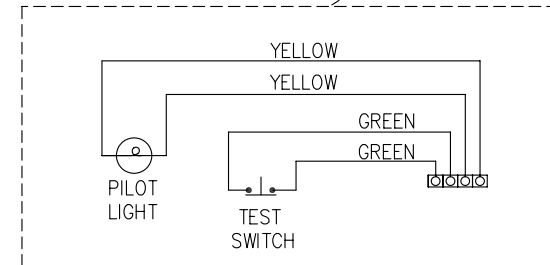
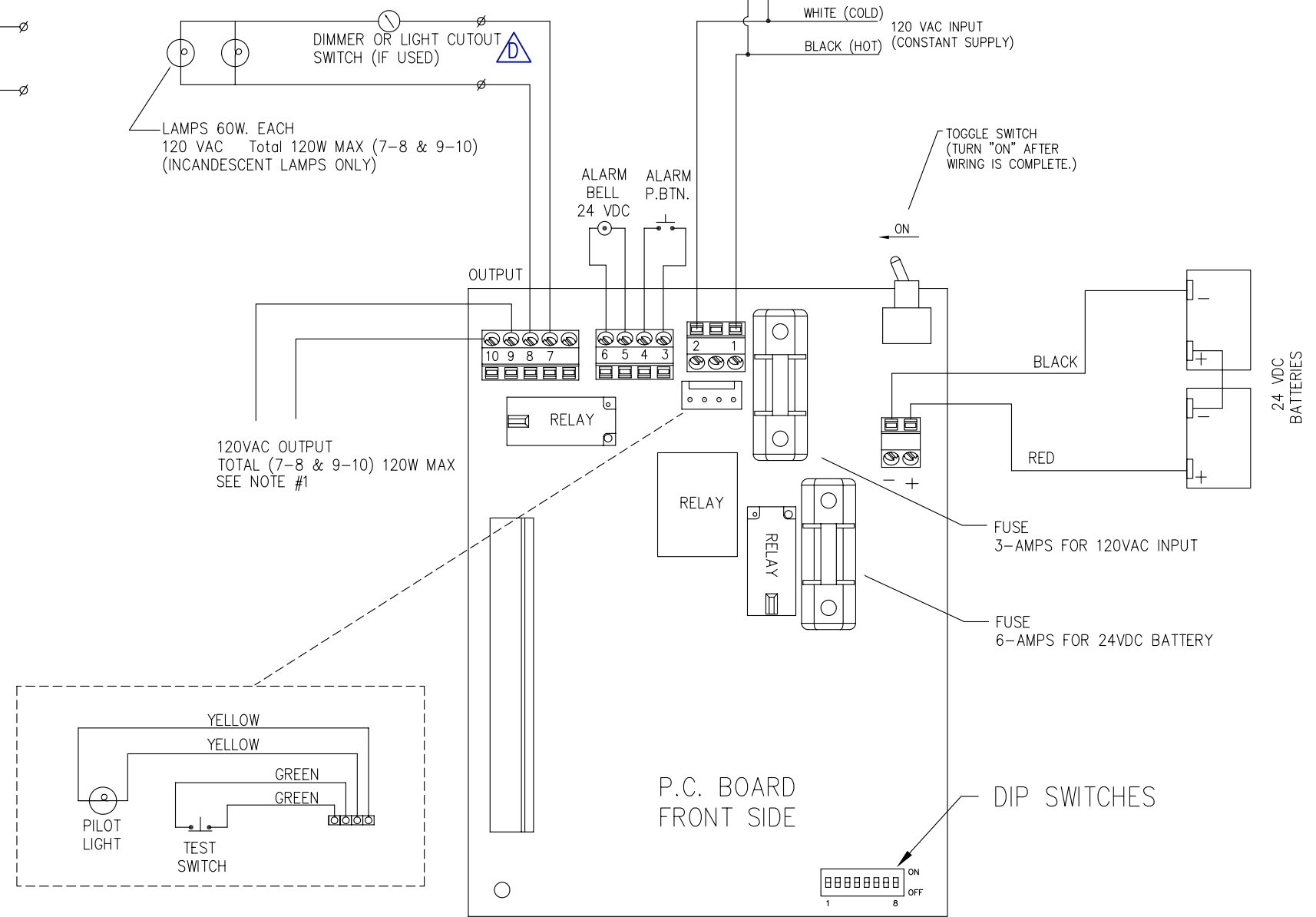
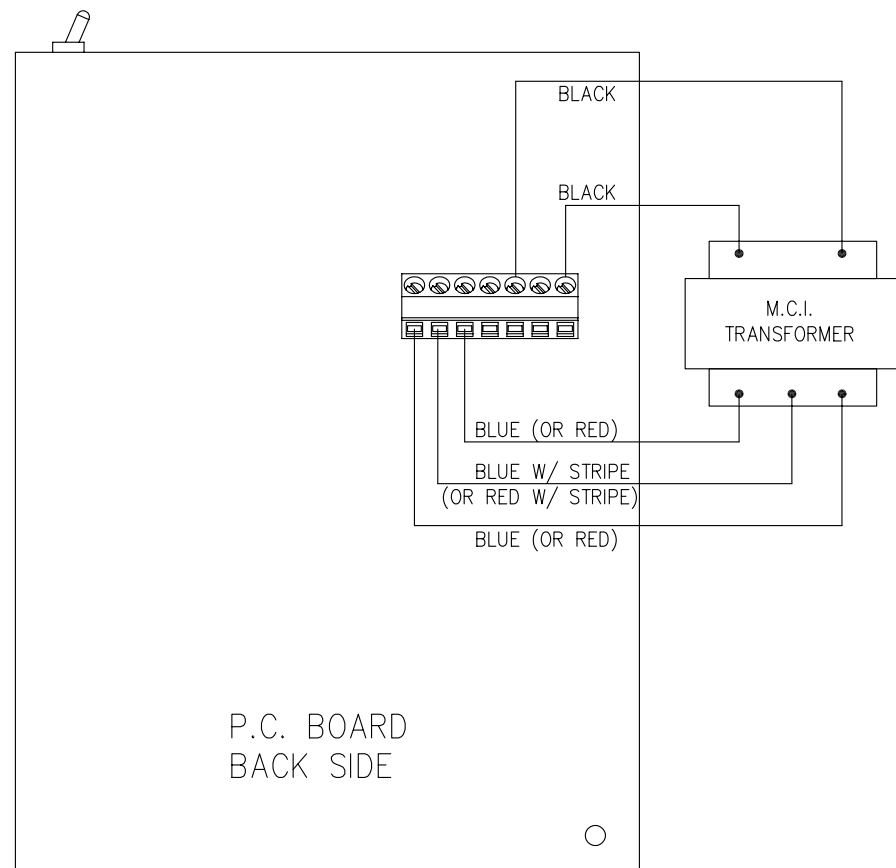
12V HALOGEN LAMPS



INCANDESCENT LAMPS



NOTE:
A SEPERATE LIGHT CUTOFF SWITCH OR DIMMER SWITCH
MUST BE USED FOR THE TWO LIGHTS BEING USED
FOR EMERGENCY USE.



NOTES:

- USE THESE TERMINALS IF THE LIGHTS ARE FOR EMERGENCY ONLY. THEY ILLUMINATE ONLY WHEN THE POWER FAILS. OTHERWISE, USE TERMINALS #7 & #8.
- ANY TYPE OF LOAD, INCANDESCENT OR FLUORESCENT, MAY BE USED AS LONG AS THE OVERALL LOAD DOES NOT EXCEED 120 WATTS.

A

- DIP 7: WHEN TURNED "ON" WILL INCREASE THE AC RMS VOLTAGE ABOUT 2 VOLTS AND IS RECOMMENDED FOR REGULAR FLUORESCENT LAMPS.
DIP 8: WHEN TURNED "ON" WILL INCREASE THE AC RMS VOLTAGE ABOUT 4 VOLTS AND IS RECOMMENDED FOR NYC HOUSING AND OTHER COMPACT FLUORESCENT LAMPS.
FOR CERTAIN SPECIFIC CONDITIONS, IT MAY BE NECESSARY TO TURN "ON" BOTH DIP 7 & 8. CONSULT EPCO BEFORE DOING SO.

DATE	SYN	REVISION RECORD	BY	CK
5-30-03	D	DIMMER NOTES (2) ADDED	RJ	
9-06-01	C	ADDED COLORS TO 120VAC INPUT WIRES; DELETED REDUNDANT BATTERY FUSE	PLR	SS
6-7-01	B	DELETED CHOKE FROM FLUORESCENT LAMP DIAGRAM	PLR	SS
3-19-01	A	ADDED NOTES FOR DIP SWITCHES 7 & 8	PLR	SS

EPCO ELEVATOR PRODUCTS CORPORATION 100 DEMAREST DRIVE WAYNE, NJ 07474	
CUSTOMER:	
JOB NAME:	
TOLERANCES DECIMAL ± .020 SHEAR ± .031	DRAWN BY: ARS DATE: 10/13/98 MODEL # SCALE:
TITLE : EFP-120 FLEXLIGHT WIRING DIAG.	
DRAWING No. 25-A-17	REV D